



# AJMER Square



अल्प व मध्यम आय वर्ग  
के परिवारों के लिए

ब्याज सब्सिडी  
2.67 लाख तक

Loanable

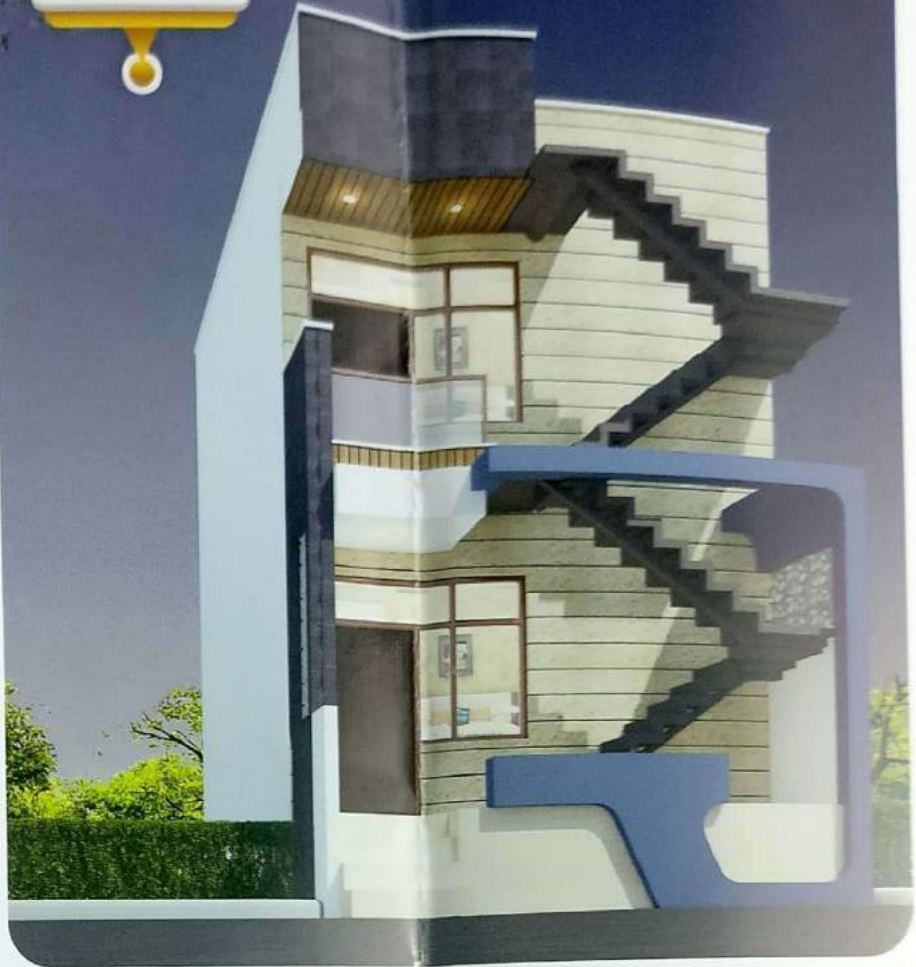
प्रोजेक्ट सुपर प्राईम लोकेशन पंचशील नगर के पास 100 फीट मेन रोड पर

**EWS**

**25  
LAKH**

LAND:  
51 SQ. YARD

CONSTRUCTION:  
G. FLOOR 358.92 SQ. FEET  
F. FLOOR 358.92 SQ. FEET



**GROUND FLOOR**



**FIRST FLOOR**

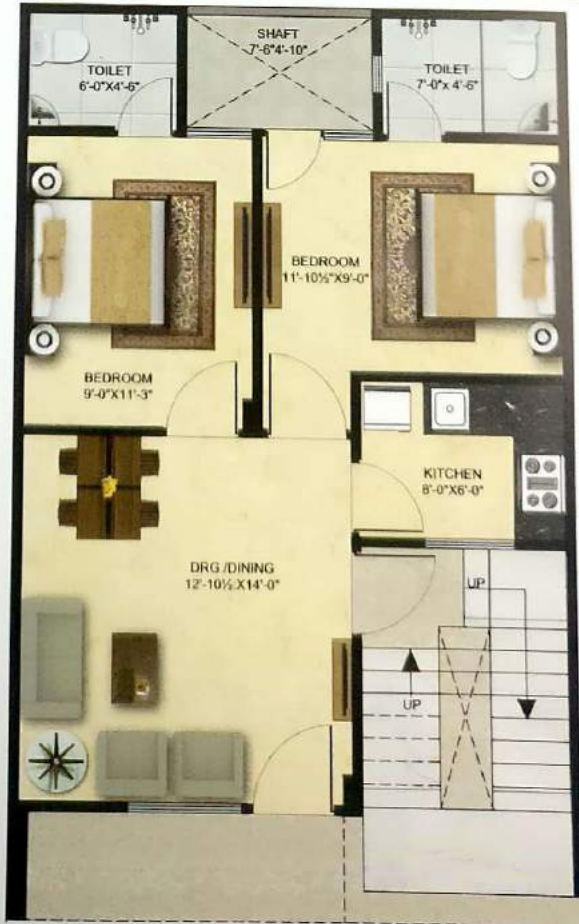


LIG

31  
LAKH

LAND:  
88 SQ. YARD

CONSTRUCTION:  
G. FLOOR 680 SQ. FEET



GROUND FLOOR

**LIG-I**

**37  
LAKH**

LAND:  
88 SQ. YARD

CONSTRUCTION:  
G. FLOOR 680 SQ. FEET  
F. FLOOR 501 SQ. FEET



**GROUND FLOOR**

**FIRST FLOOR**



## AMENITIES

### AMENITIES :

- SEMI-VASTU FRIENDLY ARCHITECTURE.
- SAFETY & SECURITY.
- PREMISES SEALED BY BOUNDARY WALL WITH "WIRE FENCING".
- 24 HOURS 2 TIER SECURITY SYSTEM WITH SURVEILLANCE BY C.C CAMERA.
- ADEQUATE GARBAGE COLLECTION & DISPOSAL AREA.
- 100% POWER BACK UP WITH SILENT D.G SET FOR COMMON AREAS.
- SEPARATE INFORMAL AREAS FOR WINDOW SHOPPING.
- FRESH DRINKING WATER SUPPLY FACILITY BY R.O. PLANT OR AS PER AVAILABILITY BY PHED DEPT.
- PARK
- DEDICATED COMMON FACILITY AREA WITH CLUB/GYM FACILITY.
- LED POLE LIGHTS IN COMMON AREAS

## SPECIFICATIONS

- SPECIFICATIONS OF A VILLA :
- LIVING ROOM : Naturally light & ventilated with 6'×3' high gloss tiles.
- BED ROOM : Finish with wallpapers & 6'×3' high gloss tiles, branded Paint, Door frame-Ply boxing, UPVC windows & semi modular "Vihan" electrical fittings.
- BATH ROOM : Anti-skid floor tiles, branded wall hung, branded C.P fitting with quality Met finish wall tiles.
- KITCHEN : Semi-Modular kitchen with Granite counter top & S.S sink.
- FACADE : Semi stone cladding with CNC & Rustic Paint.

# R.S. INFRASTRUCTURE

— THE REAL SERVERS —

OFF. ADD. "AARADHYA", 308B GROUND FLOOR,  
SHASTRI NAGAR, CHUNGI CHOWKI, AJMER

SITE ADD: 100 FT. MAIN ROAD, GANESH GUWARI,  
NEAR CSM MALL, PANCHSHEEL NAGAR, AJMER. 305001

# 9024633332

Marketed by

 **SUKHSAMPATT** REALTY